

Managing research data

Lindsey Myers, Research Support Librarian

[Library Research Support Team](#)





sources
What is research ~~data~~?
I don't have any 'data'!

Data is your stuff

Not so much *what* material is but *how* it's used

Research data is the evidence (sources) that underpin the answer to your research question ...





What is research data management?

Research data management is ...

How you look after your research data (sources) on a day-to-day basis over the lifetime of a research project

What happens to research data (sources) in the longer term - what you do with it after the project concludes

Research data management is ...

How you look after your research data (sources) on a day-to-day basis over the lifetime of a research project

What happens to research data (sources) in the longer term - what you do with it after the project concludes

The benefits

Data management
is a good thing



The benefits

Data management
is a good thing



**It's just good
research practice**





How to successfully manage your research data

Planning ahead is key

Data Management
Plan (DMP) = a good
thing!

A formal document which outlines all aspects data management, i.e. what you will do with data during and after the research project ends.

Planning ahead is key

Data Management
Plan (DMP) = a good
thing!

University recommends
AHRC with grant
applications

starting and
after the research project
ends.

DMP templates

AHRC DMP

- Data summary - What types of data? Why?
- Data collection - How you will collect and organise data?
- Short-term data storage (and backup)
- Long-term data storage (archiving)
- Data sharing - What data will be shared? How will the data be shared? What value will it have to others?
- Ethical and legal considerations (permissions / IP)

How

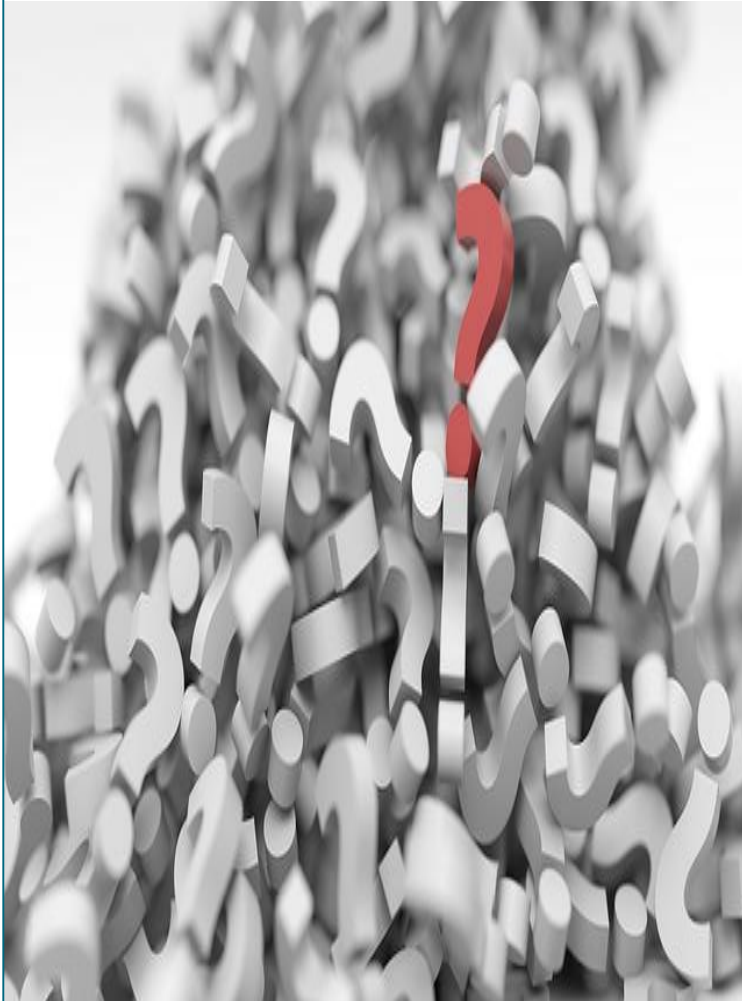
DMPonline

<https://dmponline.dcc.ac.uk>

An online tool, created by the Digital Curation Centre, which is designed to help you **create personalised data management plans** according to the requirements stipulated by the major UK funders.

York DMP template for postgraduate research projects (and prompt sheet)

www.york.ac.uk/library/info-for/researchers/data/planning



Archiving research data - considerations

Selecting what to keep

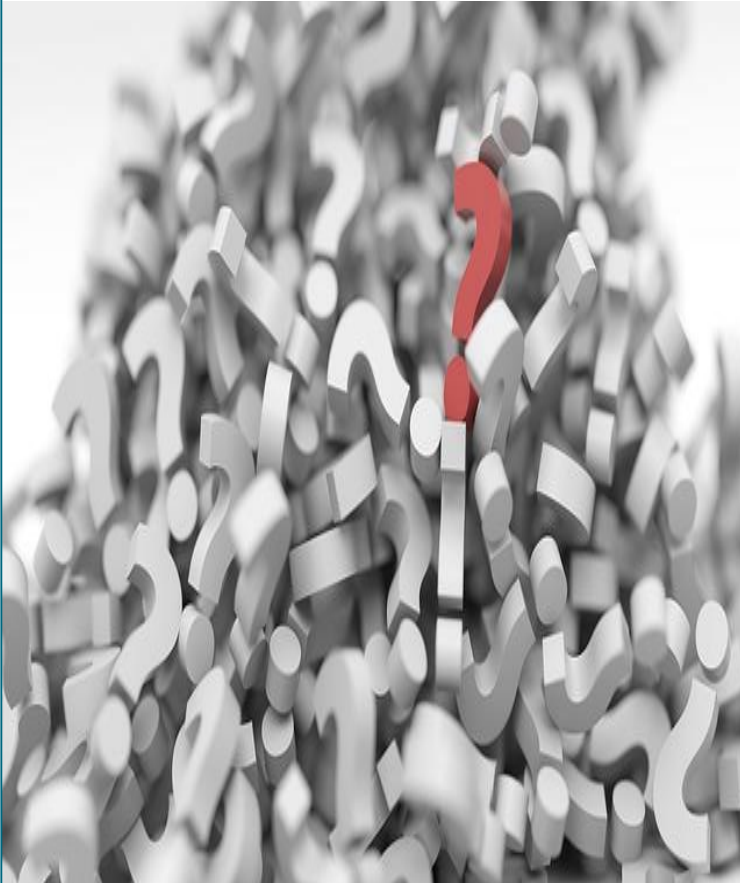
The University, and most funders, expect research data that:

- a. underpins published findings
- b. is considered to have long-term value

to be retained and shared with others.

Where possible

How option 1



Deposit research data for retention **with an external data archive / repository**

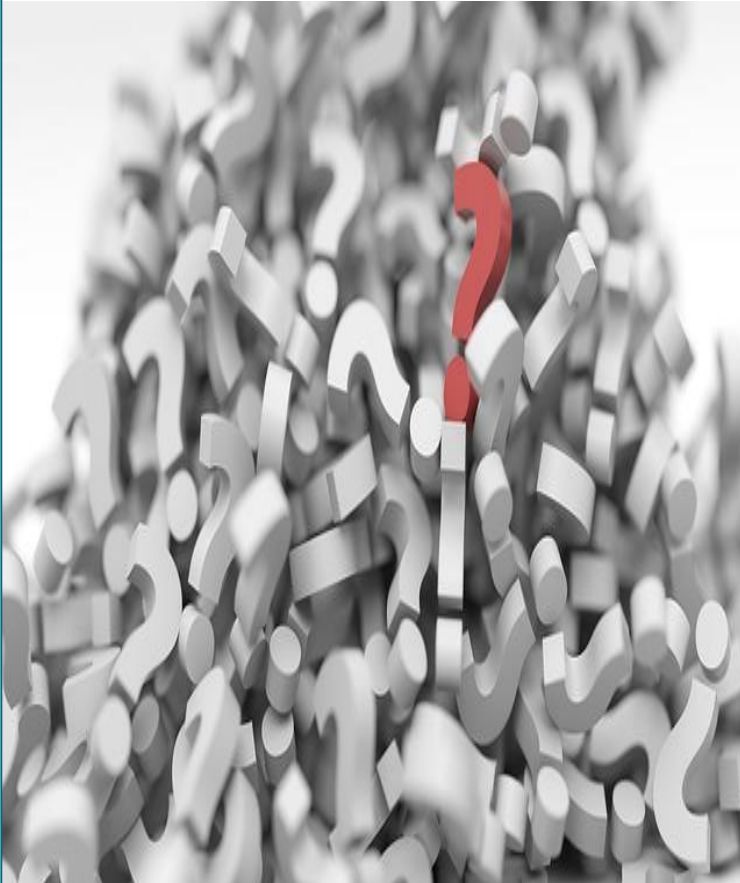
- Funder
 - “an accessible and appropriate” repository
AHRC
- discipline/subject-specific
 - www.re3data.org to identify a suitable data archive or repository for your data
- publisher

How option 2

Deposit research data for retention with the **University's Research Data York service**

We will store and manage access to your data for a minimum of 10 years

www.york.ac.uk/library/info-for/researchers/data/research-data-york



York's retained datasets

The screenshot shows the 'The York Research Database' website. The header includes the university logo and navigation links for 'University | A to Z | Departments'. The breadcrumb trail is 'Home » Research » York Research Database » Datasets » The Archbishop's Registers of the Diocese of York, 1225-1646'. A left-hand navigation menu lists categories like 'Research Database', 'Publications', 'Researchers', 'Projects', 'Activities', 'Datasets', 'Departments and units', and 'How to use this site'. The main content area features the title 'The Archbishop's Registers of the Diocese of York, 1225-1646' and an 'Overview' tab. Below this, there are sections for 'Person(s)', 'Department/unit(s)', 'Access', and 'Description'. The 'Person(s)' section lists Mark Ormrod (Owner), Julie Allinson (Creator), Paul Young (Creator), Gary Brannan (Data Manager), Chris Webb (Contributor), Christopher Taylor (Creator), Frances Cooper (Creator), and Helen Watt (Creator). The 'Department/unit(s)' section has a 'History' link. The 'Access' section states 'Access to this dataset is Open'. The 'Description' section begins with 'The York's Archbishops' Registers Revealed project funded by the Andrew W. Mellon Foundation and featured four principal strands: Conservation, Imaging, Development and Training. This dataset comprises the results of the imaging and development activities which resulted in the production of over 20,000'. To the right of the main content, there are two light blue boxes: 'Links' with options like 'Download dataset', 'Public web site and images', 'Code for editing tool', 'Code for public web application', 'Images in York Digital Library', and 'Code made available under a Creative Commons Attribution (CC BY 4.0) licence.'; and 'DOIs' with the URL 'https://doi.org/10.15124/0a14961c-82f6-4613-aedc-c7dafccc1ef0'. A 'Contact' box at the bottom right provides an email address: 'lib-research-support@york.ac.uk'.

At York all retained research data is recorded in PURE.

Dataset records then appear in the [York Research Database](#)

What you need to do

Before your project

Plan your data management

1. **Write a data management plan**

During your project

Look after your live data

3. Update the DMP
4. Organise the data
5. Store the data
6. Describe the data
7. Decide what data to keep

End of your project

Start sharing and depositing data to meet University/funder requirements

8. Deposit (and share*) the data
9. Obtain a DOI
10. Include a data access statement in publications

* Decide if data can be shared openly or if access to the data needs to be restricted.

Further help and information

RDM web pages

www.york.ac.uk/rdm

RDM 101 tutorial

complete the tutorial in the VLE

RDM workshop

book a place through SkillsForge

Research Support Team

lib-research-support@york.ac.uk

IT Support Office

itsupport@york.ac.uk